



Votive Instructions

View and download more instructions and projects at
www.LetitShineUSA.com/instructions

Making candles can be messy, so the first thing we recommend is to cover your work area with newspapers or our own Wax Off!! Always keep wax away from the sink to avoid drain problems. Assemble all your materials before starting. When making votives, you should use a cored wick to ensure that your candle will be long burning and not snuff itself out.

Materials: Votive Molds
Pre-Wicked Tabs
Wax
Color
Scent
Thermometer

Votive Molds:

If necessary, lightly spray the inside of the votive molds with a mold releasent.



Melting the Wax:

Melt your wax in a seamless container, such as a coffee can with a crimped spout or a wax melting pot. When your thermometer reaches 180°F, add your color and stir thoroughly. **Never leave melting wax unattended.** When the wax is 200°F, remove from the heat, add your scent and stir. Pour into the votive molds until ALMOST to the top of the mold (**figure 1**). Save the excess wax in your melting pot.



The Wick:

When the bottom of the votive mold appears cloudy (takes a couple of minutes), it is time to insert your wicked votive tabs. Make sure each one is centered in each votive mold. If using wick pins, please follow the instructions on the bottom of this page.

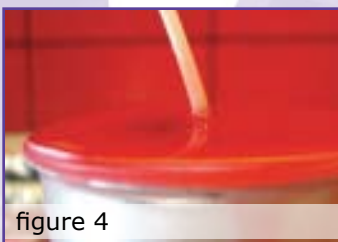
Repour:

After 30-45 minutes, you will notice that the center of the votive is developing a "well" (**figure 2**). This is perfectly normal. Reheat your leftover wax to 200°F and level off the top of your votives, leaving enough room at the top for one last repour (**figure 3**).



Second Repour:

After another 30-45 minutes, you will need to repeat the above step, filling the mold to the top. This will give your finished votive a nice, full top (**figure 4**).



It's Done:

When your votives are completely cool, just pull them out. If you are not able to, gently push down around the wick area and then pull them out. Still stuck? Put them in the refrigerator for 30 minutes and try again. You shouldn't have to resort to that though. Trim and wick and enjoy!

Wick Pin Instructionse:

Put your wick pins into your votive molds BEFORE pouring your melted wax. Proceed as instructed. After removing your votive from the mold when cooled, simply pull out the wick pin and insert a pre-wicked tab. Trim the wick, if necessary.